

15/29

Sektor I

Załącznik graficzny Nr 1

75/13

75/25

75/26

75/27

76/4

76/2

Kętrzyńska

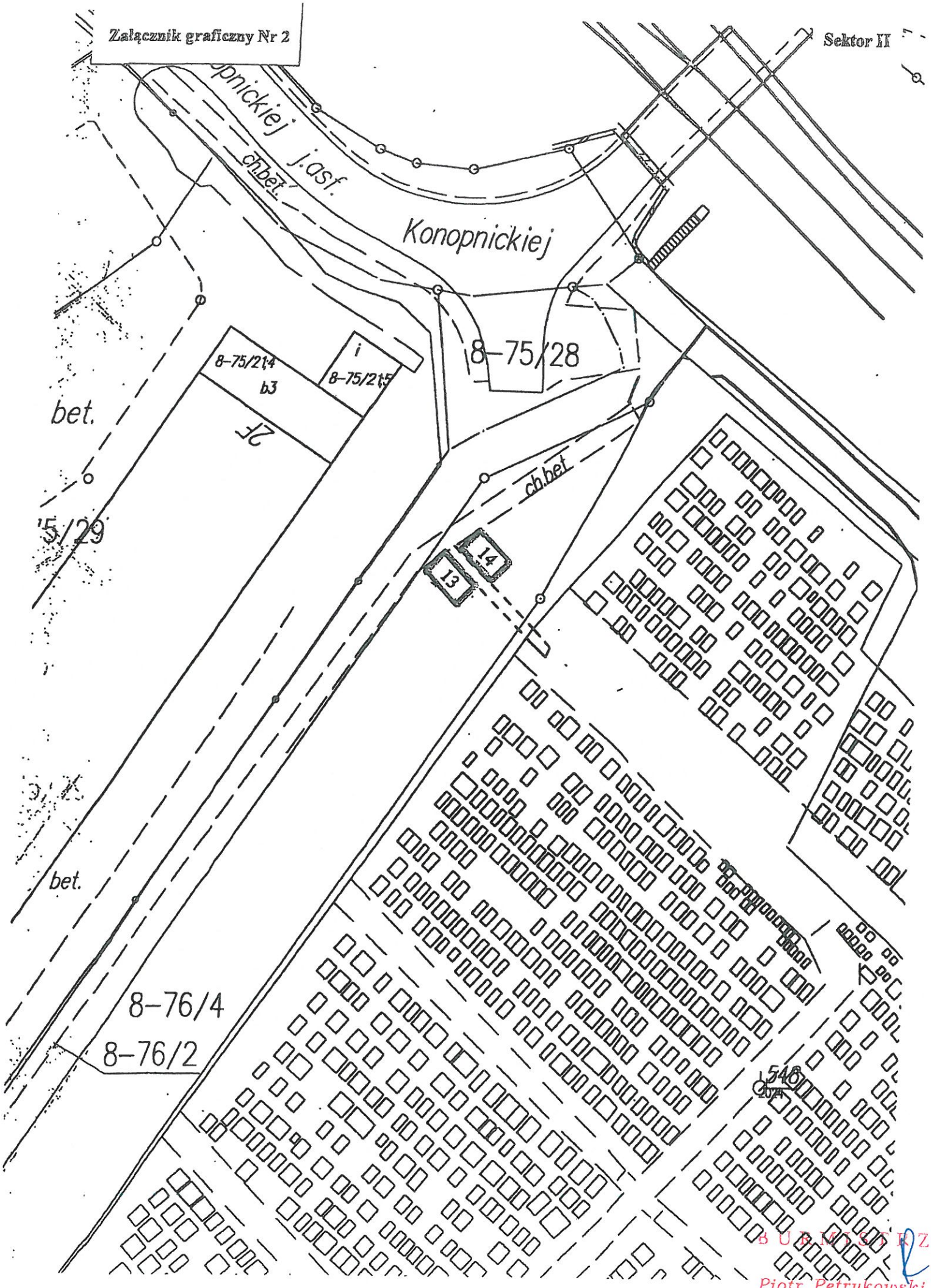


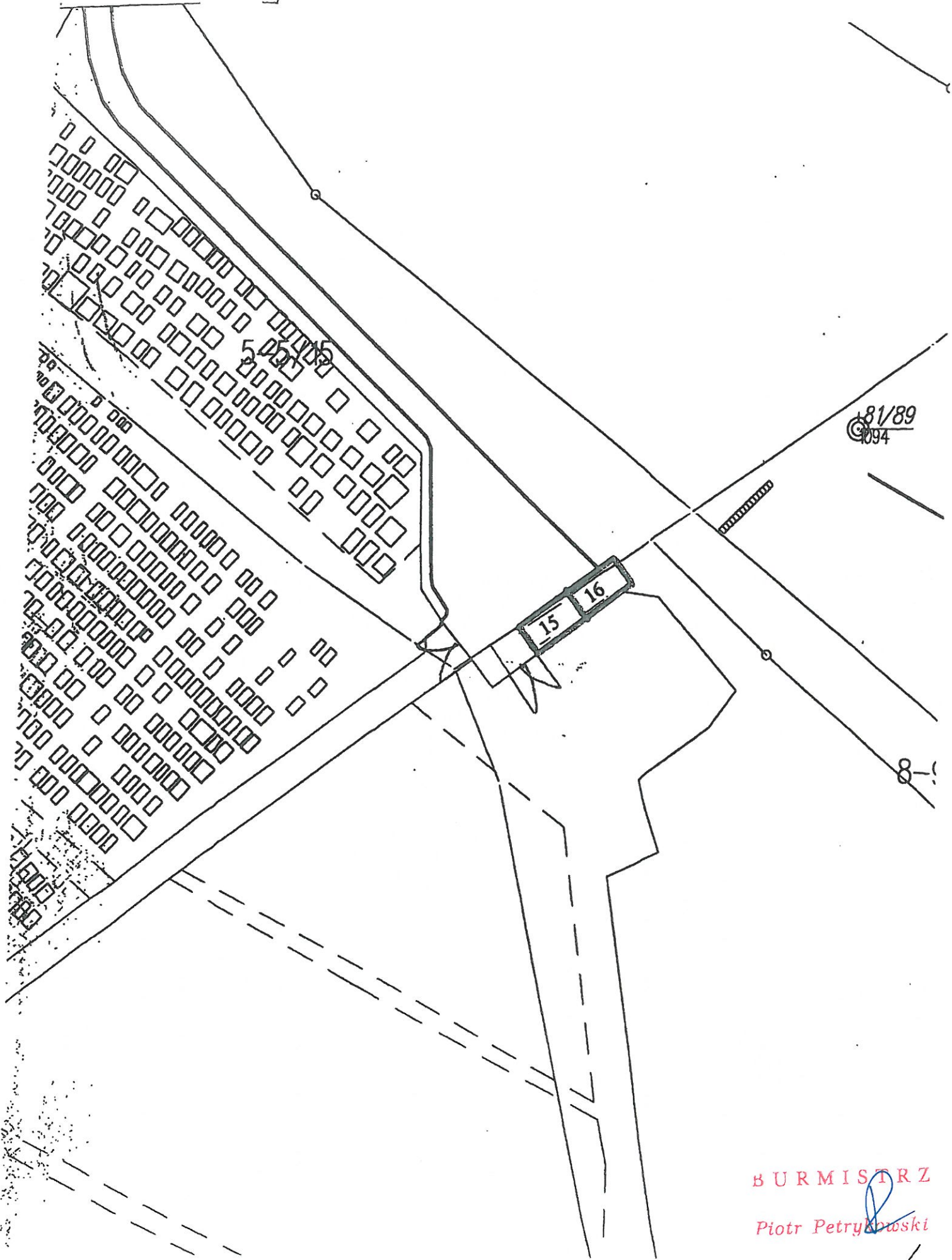
Cmentarz komunalny

159/14

Piotr Petrykowski







81/89  
© 1994

BURMISTRZ  
Piotr Petrykowski



5-48/3

żwir

żużel

bet.

- |    |
|----|
| 1  |
| 2  |
| 3  |
| 4  |
| 5  |
| 6  |
| 7  |
| 8  |
| 9  |
| 10 |
| 11 |

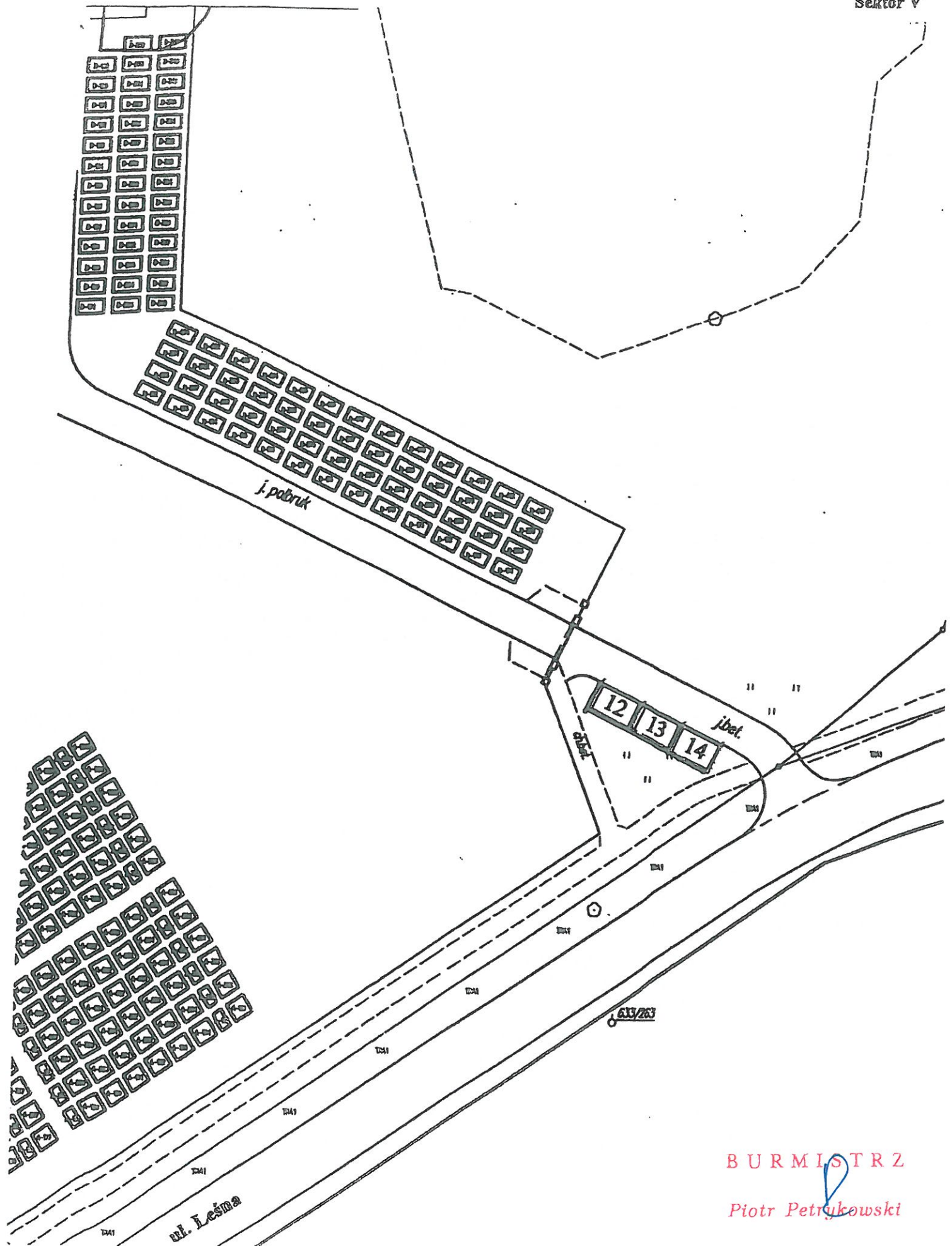
j.asf.dr.grunt Leśna

ul. Leśna

ch.bet.

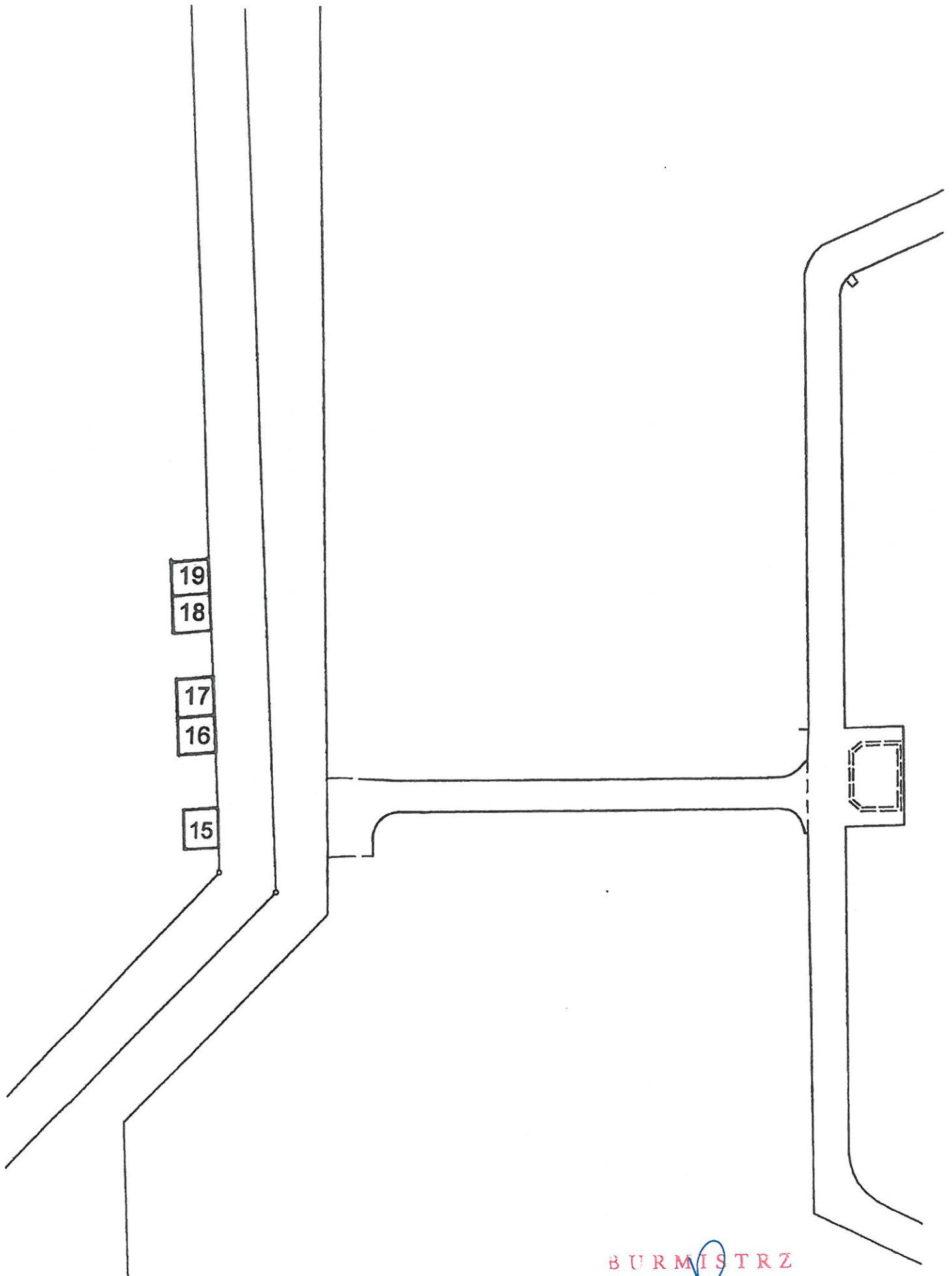
BURMISTRZ

Piotr Petrykowski



BURMISTRZ

Piotr Petrykowski



BURMISTRZ  
*Piotr Petrykowski*